

Certificate SGSCH-COC-001180

The management system of

# Mondi Paper Sales GmbH - Uncoated Fine Paper

Marxergasse 4a  
AT - 1030 Vienna

has been assessed and certified as meeting the requirements of

## Chain-of-Custody

The company was assessed against the following standards:  
FSC-STD-40-004 V2-1 Standard for COC Certification – October 2011

for the products detailed in the scope below

Handel mit Papierprodukten (FSC Mix, FSC Recycled) mit ausgelagerter Lagerung, Transfersystem.  
Trade of paper products (FSC Mix, FSC Recycled), with outsourced storage, using the transfer system.

This certificate is valid from 18 May 2017 until 17 May 2022  
Issue 4. Certified since October 2002  
SGS Ref [ CH13/0975 ]

Authorised by

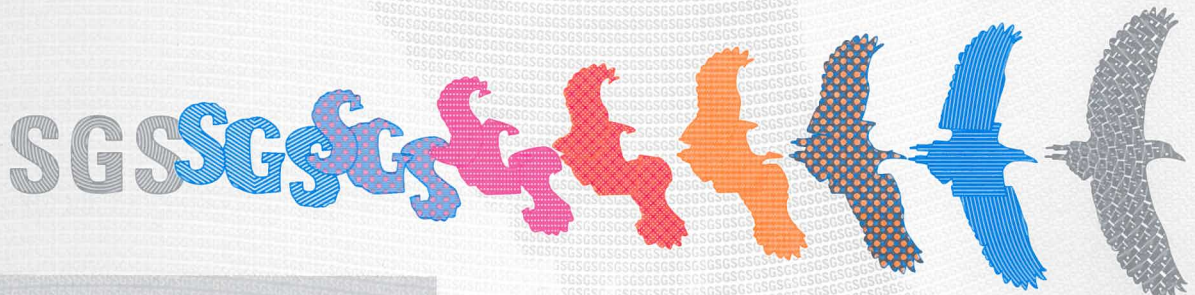
SGS Société Générale de Surveillance SA Certification and Business Enhancement  
Technoparkstrasse 1 8005 Zurich Switzerland  
t +41 (0)44 445-16-80 f +41 (0)44 445-16-88 www.sgs.com

The validity of this certificate shall be verified on <http://info.fsc.org/>  
For the full list of product groups covered by the certificate see <http://info.fsc.org/>  
This certificate itself does not constitute evidence that a particular product supplied by the certificate holder is FSC-certified [or FSC Controlled Wood]. Products offered, shipped or sold by the certificate holder can only be considered covered by the scope of this certificate when the required FSC claim is clearly stated on invoices and shipping documents.  
This certificate remains the property of SGS and shall be returned upon request.



The mark of responsible forestry

Accredited  
FSC-ACC-037



The Organisation

# Mondi Neusiedler GmbH

Theresienthalstraße 50  
AT - 3363 Ulmerfeld-Hausmening



has been assessed and its products certified as meeting the requirements of

## Chain-of-Custody

The company was assessed against the following standards:  
FSC-STD-40-004 V2-1 Standard for COC Certification – October 2011  
FSC-STD-40-007 V2-0 Sourcing reclaimed materials – April 2011  
FSC-STD-40-003 V2-1 Chain of Custody Certification of Multiple Sites – November 2014

for the products detailed in the scope below

This certificate is valid from 14 March 2016 until 13 March 2021  
Issue 4. Certified since March 2001  
SGS Ref # CH12/1529

Authorised by

SGS Société Générale de Surveillance SA Systems & Services Certification  
Technoparkstrasse 1 8005 Zurich Switzerland  
t +41 (0)44 445-16-80 f +41 (0)44 445-16-88 www.sgs.com



The mark of responsible forestry

Accredited  
FSC-ACC-037

The validity of this certificate shall be verified on <http://info.fsc.org/>  
For the full list of product groups covered by the certificate see <http://info.fsc.org/>  
This certificate itself does not constitute evidence that a particular product supplied by the certificate holder is FSC-certified (or FSC Controlled Wood).  
Products offered, shipped or sold by the certificate holder can only be considered covered by the scope of this certificate when the required FSC claim is clearly stated on invoices and shipping documents

This certificate remains the property of SGS and shall be returned upon request.



# Mondi Neusiedler GmbH

## Chain-of-Custody



Issue 1

Detailed scope

**Einkauf von Zellstoff (FSC Mix, FSC Recycled, FSC Controlled Wood) und Recyclingmaterial, Herstellung und Verkauf von FSC Mix und FSC Recycled zertifizierten Bürokommunikationspapieren mit dem Kreditsystem. Ausrüstung und Verkauf von zugekauftem Papier (FSC Mix) mit dem Transfersystem.**

**Purchase of pulp (FSC Mix, FSC Recycled, FSC Controlled Wood) and reclaimed material, manufacture and sale of FSC Mix and FSC Recycled certified office communication paper using the credit system. Finishing and sale of purchased paper (FSC Mix) using the transfer system.**

Additional facilities

**Mondi Neusiedler GmbH, 3. Strasse 1, Kematen, 3331, Austria**



The mark of  
responsible forestry

Accredited  
FSC-ACC-037

Certificate SGSCH-COC-110024  
SGSCH-CW-110024

The management system of

# Ybbstaler Zellstoff GmbH

3. Straße 1  
AT - 3331 Kematen

has been assessed and certified as meeting the requirements of

## Chain-of-Custody

The company was assessed against the following standards:  
FSC-STD-40-004 V2-1 Standard for COC Certification – October 2011  
FSC-STD-40-005 V2-1 Company Evaluation of Controlled Wood – April 2007

for the products detailed in the scope below

**Einkauf von Hackschnitzeln (FSC Mix, FSC Controlled Wood und controlled wood), Herstellung und Verkauf von Zellstoff (FSC Mix, FSC Controlled Wood) mit dem Creditsystem.**

**Purchase of wood chips (FSC Mix, FSC Controlled Wood, and controlled wood), manufacture and sale of FSC Mix certified pulp using the credit system.**

This certificate is valid from 8 March 2016 until 7 March 2021  
Issue 1. Certified since March 2016  
SGS Ref [ CH16/0437 ]

Authorised by

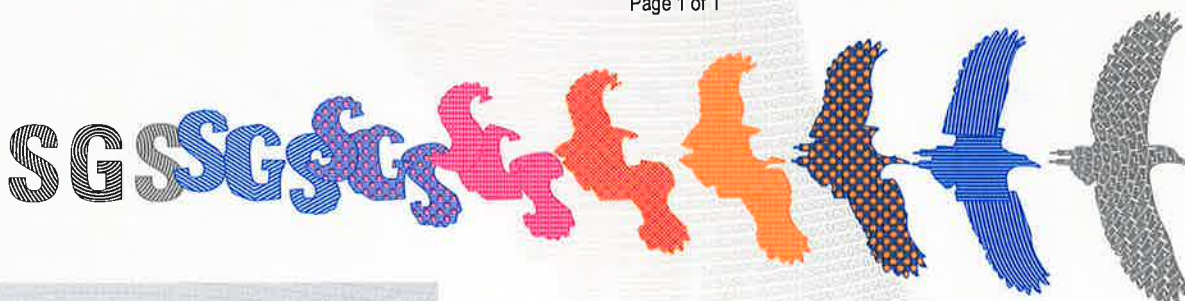
SGS Société Générale de Surveillance SA Systems & Services Certification  
Technoparkstrasse 1 8005 Zurich Switzerland  
t +41 (0)44 445-16-80 f +41 (0)44 445-16-88 www.sgs.com

The validity of this certificate shall be verified on <http://info.fsc.org/>  
For the full list of product groups covered by the certificate see <http://info.fsc.org/>  
This certificate itself does not constitute evidence that a particular product supplied by the certificate holder is FSC-certified [or FSC Controlled Wood]. Products offered, shipped or sold by the certificate holder can only be considered covered by the scope of this certificate when the required FSC claim is clearly stated on invoices and shipping documents  
This certificate remains the property of SGS and shall be returned upon request.



The mark of responsible forestry

Accredited  
FSC-ACC-037





Certificate SGS-COC-002989,  
SGS-CW-002989

The management system of

## Mondi SCP, a.s.

Tatranská cesta 3, 034 17 Ružomberok , Slovakia

has been assessed and certified as meeting the requirements of

## Chain-of-Custody

The company was assessed against the following standards:  
FSC-STD-40-004 V2-1 Standard for COC Certification – October 2011

and

FSC-STD-40-005 V2-1 Standard for Company Evaluation of FSC Controlled Wood – April 2007

and

FSC-STD-50-001 V1-2 Standard Requirements for use of the FSC trademarks by  
Certificate Holders - November 2010

for the products detailed in the scope below

The production and sale of FSC Mix and FSC Controlled wood office, offset and wrapping papers, pulp and logs and chips produced from FSC certified, FSC Controlled wood raw wood, wooden by-products and pulp, manufactured under the credit system.

This certificate is valid from 3 January 2017 until 2 January 2022

Issue 7. Certified since March 2007

SGS Ref # SK11/1557

Authorised by

SGS South Africa (Pty) Ltd

PO Box 90 Gallo Manor 2052, Harrowdene Office Park Building 1 Western Service Road Woodmead  
Johannesburg 2191 South Africa

t +27 (0) 11 800-1000 f +27 (0) 11 800-1020 <http://www.sgs.com/en/Agriculture-Food/Forestry/>

The validity of this certificate shall be verified on <http://info.fsc.org/>

For the full list of product groups covered by the certificate see <http://info.fsc.org/>

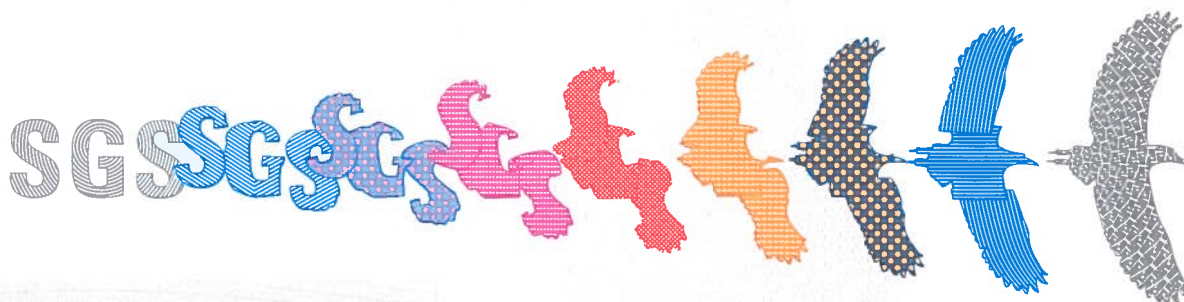
This certificate itself does not constitute evidence that a particular product supplied by the certificate holder is FSC-certified (or FSC Controlled Wood).  
Products offered, shipped or sold by the certificate holder can only be considered covered by the scope of this certificate when the required FSC claim is clearly stated on invoices and shipping documents

This certificate remains the property of SGS and shall be returned upon request.

Page 1 of 1



The mark of responsible forestry



This document is issued by the Company subject to its General Conditions of Certification Services accessible at [www.sgs.com/terms\\_and\\_conditions.htm](http://www.sgs.com/terms_and_conditions.htm). Attention is drawn to the limitations of liability, indemnification and jurisdictional issues established therein. The authenticity of this document may be verified at <http://www.sgs.com/en/certified-clients-and-products/certified-client-directory>. Any unauthorized alteration, forgery or falsification of the content or appearance of this document is unlawful and offenders may be prosecuted to the fullest extent of the law.



FOREST  
CERTIFICATION

# CERTIFICATE

**FC-COC-643288 FC-CW-643288**

**АО «Монди СЛПК»**

**JSG "Mondi SLPK"**

Соответствует требованиям FSC

*Complies with FSC requirements in part of*

Закупка, производство и реализация лесопроductии

*Procurement, production and sales of timber products*

Оценка проводилась по стандартам

FSC-STD-40-004 v.3.0; FSC-STD-40-005 v.3.1

*The evaluation was based on the standards*

*FSC-STD-40-004 v.3.0; FSC-STD-40-005 v.3.1*

Дата выдачи

30.05.2019

*Date of issue*

Действителен до

29.05.2024

*Valid until*

Руководитель органа по  
сертификации

*Director of the Certification body*

П.В. Трушевский

*Mr. Pavel Trushevskii*



The mark of  
responsible forestry

Действие данного сертификата можно быстро проверить на <http://info.fsc.org>  
The validity of this certificate shall be verified for <http://info.fsc.org>



FOREST  
CERTIFICATION

# Приложение 1 к сертификату Annex 1 to certificate FC-COC-643288 FC-CW-643288

**АО «Монди СЛПК»**

**JSC "Mondi SLPK"**

167026, РОССИЯ, Республика Коми, город Сыктывкар, проспект Бумажников, дом 2  
2 bld., Bumazhnikov prospect, Syktyvkar, Republic of Komi, RUSSIA, 167026

Область сертификации (индивидуальная сертификация):

W1.1 Круглые лесоматериалы (бревна); W1.2 Топливная древесина; W3.1 Древесная щепа; P 1.3 Химическая древесная масса, беленая; P 2.1.2 Бумага немелованная; P 2.2 Бумага газетная; P 3.1. Картон немелованный; P 4.1 Прямой картон или целлюлозно-макулатурная бумага как наружные слои гофрированного картона

Сосна обыкновенная (*Pinus sylvestris*), Сосна черная (*Pinus nigra*), Ель европейская (*Picea abies*), Пихта белая (*Abies alba*), Пихта сибирская (*Abies sibirica*), Ель сибирская (*Picea obovata*), Лиственница сибирская (*Larix sibirica*), Лиственница европейская (*Larix decidua*), Сосна сибирская кедровая (*Pinus sibirica*), Береза пушистая (*Betula pubescens*), Береза повислая (*Betula pendula*), Осина европейская (*Populus tremula*), Бук европейский (*Fagus sylvatica*), Граб обыкновенный (*Carpinus betulus*)

Система контроля FSC заявлений: переводная, кредитная

FSC заявления: FSC 100%, FSC Mix Credit, FSC Controlled Wood, FSC Recycled

Площадки: 167026, РОССИЯ, Республика Коми, город Сыктывкар, проспект Бумажников, дом 2

*Scope of certification (single certification):*

W1.1 Roundwood (logs); W1.2 Fuel wood; W3.1 Wood chips; P 1.3 Chemical pulp, bleached;  
P 2.1.2 Uncoated paper; P 2.2 Newsprint; P 3.1. Uncoated paperboard; P 4.1 Linerboard or testliner

Scotch pine (*Pinus sylvestris*), Austrian pine (*Pinus nigra*), European spruce (*Picea abies*), Siberian spruce (*Picea obovata*), Fir silver (*Abies alba*), Siberian fir (*Abies sibirica*), Siberian larch (*Larix sibirica*), European larch (*Larix decidua*), Siberian pine cedar (*Pinus sibirica*), Downy birch (*Betula pubescens*), White birch (*Betula pendula*), European Aspen (*Populus tremula*), Common beech (*Fagus sylvatica*), European hornbeam (*Carpinus betulus*)

*Systems of controlling FSC claims: transfer, credit*

*FSC claims: FSC 100%, FSC Mix Credit, FSC Controlled Wood, FSC Recycled*

*Production sites: 2 bld., Bumazhnikov prospect, Syktyvkar, Republic of Komi, RUSSIA, 167026*

Полный перечень FSC групп продукции, а также других данных об области сертификации держателя сертификата можно получить в базе данных FSC в Интернете по адресу: <http://info.fsc.org>

Full list of FSC product groups with other data about the certification scope of the certificate holder can be found in FSC Database in the Internet at <http://info.fsc.org>

Сертификат является собственностью ООО «Лесная Сертификация» и должен быть немедленно возвращен или уничтожен по первому требованию (вместе со всеми копиями) и калечатанными экземплярами

The certificate shall remain the property of "Forest Certification" LLC and has to be returned or destroyed upon request (with all copies or reproductions of the certificate)

Сертификат сам по себе не является свидетельством того, что конкретный продукт, поставленный держателем сертификата, является FSC сертифицированным (или произведенным из FSC контролируемой древесины). Продукция предлагаемая, поставляемая или продаваемая держателем сертификата, может считаться включенной в область действия этого сертификата, если в счетах-фактурах и отгрузочных документах четко указано необходимое заявление FSC.

This certificate itself does not constitute evidence that a particular product supplied by the certificate holder is FSC-certified (or FSC Controlled Wood). Product offered, shipped or sold by the certificate holder can only be considered covered by scope of this certificate when the required FSC claim is clearly stated on invoices and shipping documents.

bld. 1, Vasilisy Kozhinoy str., Moscow, Russia, 121096  
Phone/fax +7 (495) 640-84-92; +7 (812) 348-69-88  
URL: <http://www.fc.ru>, e-mail: [director@fc.ru](mailto:director@fc.ru)



The mark of  
responsible forestry